

Product leaflet

Product

Powered air purifying particle filter respirator SR 700

Model No.

SR 700

Ordering No.

H06-7010

Product Description

The SR 700 is a battery-powered fan that, together with particle filter SR 510 P3 R or SR 710 P3 R and an approved head top, is included in the Sundström fan-assisted respiratory protective device systems. The SR 700 can be used as an alternative to filter respirators in all situations in which these are recommended. This applies particularly to work that is hard, warm or of long duration.

The fan is equipped with filter, and the filtered air is fed through a hose to the human interface. The pressure then generated prevents surrounding pollutants from penetrating into the mask.

The characteristics of the SR 700 are as follows:

The battery is of lithium-ion type • Two battery alternatives, i.e. STD (Standard 2.25 Ah) and HD (Heavy Duty 3.5 Ah) • The charging time for the Standard battery is around 2 hours and for the Heavy Duty battery, about 3 hours • Equipped with two particle filters • Operating time of up to 8 hours • The same control is used for starting, stopping and selection of operating status • Display with symbols • Alarm with audible/visual signals if the air flow is obstructed • Equipped with automatic air flow control • Can be used together with hoods SR 520, SR 530, SR 561, SR 562, SR 601, SR 602 face shield SR 570, half mask SR 900, full face mask SR 200, welding shield SR 592, helmet with visor SR 580 and welding shield/helmet with visor SR 584/SR 580.

Electronics ingress protection is approved in IP class IP67 according to IEC / EN 60529.

Technical specification

	SR 700	EN 12941:1998	EN12942:1998
Air flow, min/max	175 - 225 l/min	≥ 120 l/min	-
STD-battery/HD-Battery	14,4 V 2,25 Ah/3,5 Ah	-	-
Operating times at 175/225 l/min:			
P3, STD-battery	> 6 h/4 h	≥ 4 h	≥ 4 h
P3, HD-battery	8 h/5,5 h	≥ 4 h	≥ 4 h
Weight with STD-battery and P3 filter	≈ 1,100 g	≤ 3,500 g	≤ 3,500 g
Service temperature	-10 – +55 °C, < 90 % RH	-	-
Storage temperature	-20 – +40 °C, < 90 % RH	-	-
Low flow warning level	< 175 l/min	≤ 175 l/min	≤ 175 l/min
Assigned Protection Factor ¹ : SR 520, SR 530, SR 561/562, SR 580, SR 584, SR 601, SR 602	40 (TH3)	-	-
Assigned Protection Factor ¹ SR 200, SR 900	40 (TM3)	-	-
Nominal Protection Factor ² SR 520, SR 530, SR 561/562, SR 580, SR 584, SR 601, SR 602	500 (TH3)	-	-
Nominal Protection Factor ² SR 200, SR 900	2000 (TM3)	-	-
Approvals	EN 12941:1998 + A2:2008 EN 12942:1998 + A2:2008	-	-

1) Specified in BS 4275 and applies generally to all approved fan-assisted respiratory protective devices, regardless of the test results.

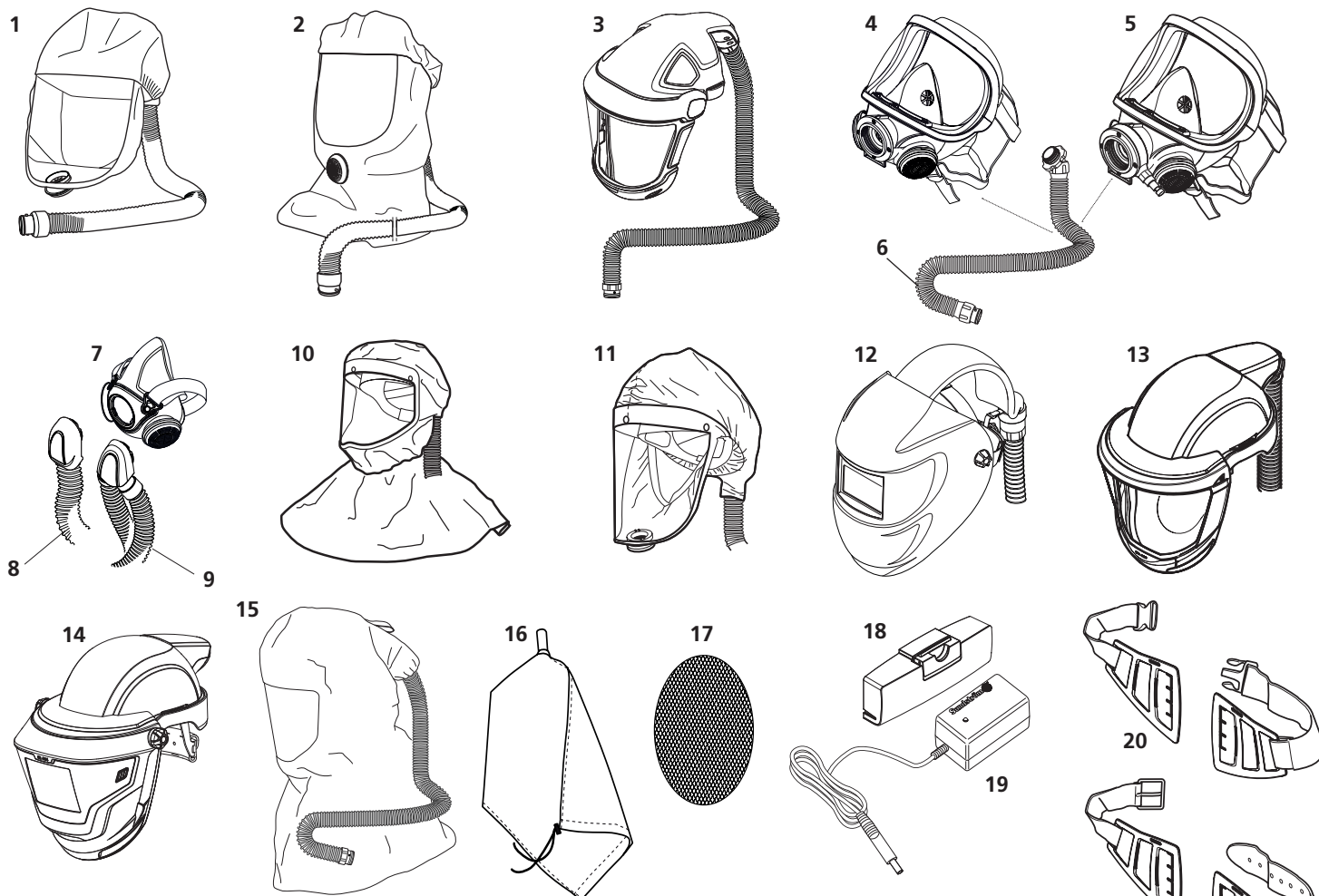
2) According to EN 529:2005.



Sundström Safety AB

Tel: +46 10 484 87 00
Västergatan 4
SE-341 50 Lagan

Sundström
www.srsafety.com



SR 700, head-tops, spare parts and accessories

Item

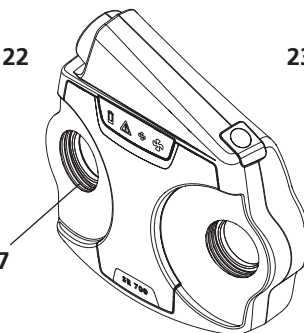
No. Part

Ordering No.

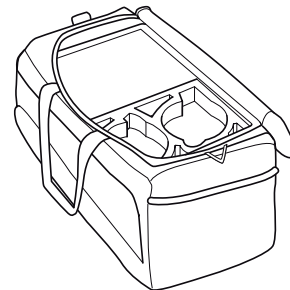
1.	Hood SR 520 M/L	H06-0212
1.	Hood SR 520 S/M	H06-0312
2.	Hood SR 530	H06-0412
3.	Face shield SR 570	H06-6512
4.	Full face mask SR 200, PC visor	H01-1212
4.	Full face mask SR 200, glass visor	H01-1312
5.	Full face mask SR 200 Airline, PC visor	H03-1012
5.	Full face mask SR 200 Airline, glass visor	H03-1212
6.	PU hose SR 550 for SR 200	T01-1216
6.	Rubber hose SR 551 for SR 200	T01-1218
7.	SR 900 S	H01-3012
7.	SR 900 M	H01-3112
7.	SR 900 L	H01-3212
8.	Hose SR 951	T01-3003
9.	Twin hose SR 952	R01-3009
10.	Hood SR 561	H06-5012
11.	Hood SR 562	H06-5112
12.	Welding shield SR 592	H06-4412
13.	Helmet with visor SR 580	H06-0812
14.	Welding shield/Helmet with visor SR 584/SR 580	H06-8310
15.	Hood SR 601	H06-5412
15.	Hood SR 602	H06-5512
16.	Flow meter SR 356	R03-0346
17.	Steel net disc SR 336	T01-2001
18.	Battery SR 701, 2,25 Ah	R06-0708
18.	Battery HD, SR 702, 3,5 Ah	T06-0701
19.	Battery charger SR 713	R06-0706
20.	Belt SR 508	R06-0101
20.	Rubber belt SR 504	T06-0104
20.	PVC belt	T06-0124
21.	Leather belt SR 503	T06-0103
21.	Leather belt SR 503, large	T06-0107
22.	Fan SR 700, bare	R06-0710
23.	Storage bag SR 505 w two compartments	T06-0102
24.	Pre-filter SR 221	H02-0312
25.	Pre-filter holder	R01-0605
26.	Particle filter P3 R, SR 710	H02-1512
27.	Gasket for fan	R06-0107
28.	Harness	T06-0116
29.	Filter adapter	R06-0701
30.	Particle filter P3 R, SR 510	H02-1312

22

27

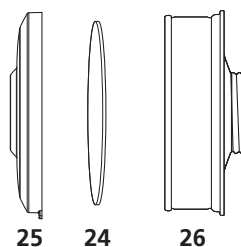
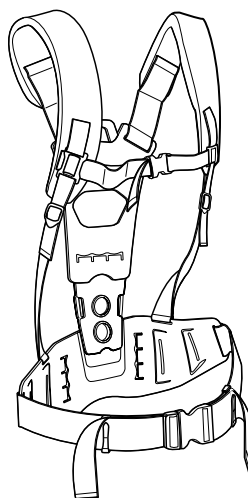


23



21

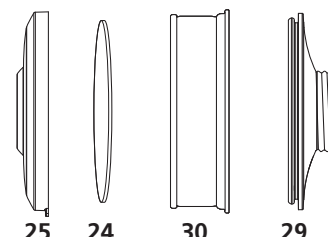
28



25

24

26



25

24

30

29

Product leaflet

Product
Full face mask

Model No.
SR 200, PC visor
SR 200, glass visor

Ordering No.
H01-1212
H01-1312

Product Description

The SR 200 full face mask is made of silicone and is produced in one size that will fit most face sizes. The mask is equipped with three inhalation valves and two exhalation valves, and the breathing resistance is therefore very low. The exhalation valve covers with baffles effectively protect the valves and membranes against dust and paint mist. The design and location of the exhalation valves improve the scope available for communicating. The material and pigments of the mask body are FDA- and BGA approved for exposure to provisions, which minimizes the risk of contact allergies. The easily adjustable elastic head harness of the mask is secured to the visor frame and to the exhalation valves which, together with a large crown plate, contributes towards a comfortable and secure fit. The spherical visor of the mask is made of scratch-resistant polycarbonate, which provides a large field of vision. The mask can be used either as a filtering device in combination with filters from the Sundström range of filters, or as a breathing apparatus with a continuous air flow together with the SR 307 compressed air attachment. The SR 200 can also be used as head top together with the Sundström fan unit SR 500 or SR 700. Holder for pre-filter is included.

The SR 200 full face masks together with the SR 500 EX fan are approved for use in a potentially explosive atmosphere. Best stored in box SR 344 alternatively storage case SR 339-1 or SR 339-2.

Technical specification

	SR 200	EN 136:1998, EN 166:2001, EN 148-1:1999	
Inhalation resistance at 30 l/min	≈ 10 Pa	≤ 50 Pa	
Exhalation resistance at 160 l/min	≈ 56 Pa	≤ 300 Pa	
Service temperature	-10 – +55 °C, < 90 % RH	-	
Storage temperature	-20 – +40 °C, < 90 % RH	-	
Weight	≈ 450 g	-	
Impact test with 6 mm dia. steel ball against PC-visor	120 m/s	120 m/s	
Standard thread connection	40 x 1/7"	40 x 1/7"	
Assigned Protection Factor ¹	40 (P3) 20 (GasX) 20 (GasX P3)	- - -	
Nominal Protection Factor ²	1000 (P3) 2000 (GasX) 1000 (GasX P3)	- - -	
Approvals	Directive PPE Regulation (EU) 2016/425 ATEX 2014/34/EU IECEx Scheme	Standards EN 136:1998 EN IEC 60079-0:2018, EN 60079-11:2012 IEC 60079-0:2017, IEC 60079-11:2011	Classification/markings Class 3 ³⁾ , Class 2 ⁴⁾ Ex II 2 G Ex ib IIA T3 Gb ⁵⁾ Ex II 2 G Ex ib IIB T3 Gb ⁶⁾ Ex II 2 D Ex ib IIIC T195°C Db ⁷⁾ Ex ib IIA T3 Gb ⁵⁾ , Ex ib IIB T3 Gb ⁶⁾ Ex ib IIIC T195°C Db ⁷⁾

1) Specified in BS 4275 and applies to all approved full-face masks with particulate filter P3, regardless of the test results.

2) According to EN 529:2005.

3) Applies to H01-1212 with PC visor.

4) Applies to H01-1312 with glass visor.

5) Applies to H01-1212 with PC visor together with SR 500 EX fan.

6) Applies to H01-1312 with glass visor together with SR 500 EX fan.

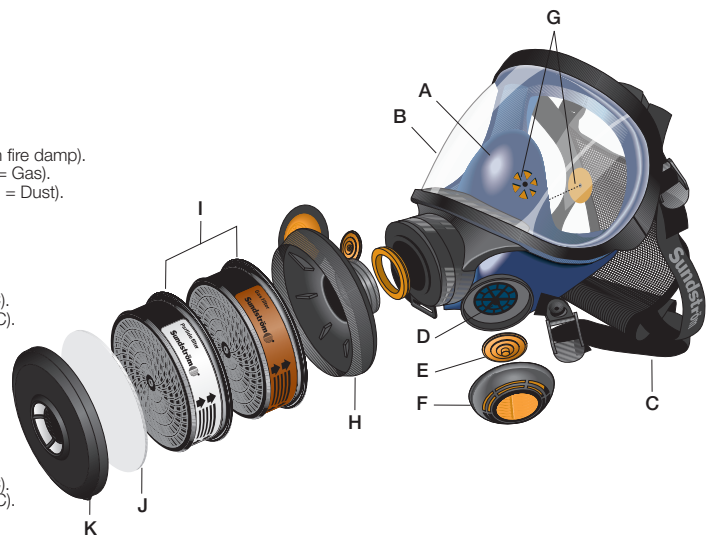
7) Applies to all SR 200 models together with SR 500 EX fan.

Key to ATEX marking

Ex	Explosion protection mark.
II	Equipment group (explosive atmospheres other than mines with fire damp).
2 G	Equipment category (2 = High level of protection for Zone 1, G = Gas).
2 D	Equipment category (2 = High level of protection for Zone 21, D = Dust).
Ex	Explosion protected.
ib	Type of protection (Intrinsic safety).
IIA	Gas group (Propane).
IIB	Gas group (Ethylene).
IIIC	Dust material group (zone with conductive dust).
T3	Temperature class, gas (maximum surface temperature +200°C).
T195°C	Temperature class, dust (maximum surface temperature +195°C).
Gb	Equipment Protection Level, gas (high protection).
Db	Equipment Protection Level, dust (high protection).

Key to IECEx marking

Ex	Explosion protected.
ib	Type of protection (Intrinsic safety).
IIA	Gas group (Propane).
IIB	Gas group (Ethylene).
IIIC	Dust material group (zone with conductive dust).
T3	Temperature class, gas (maximum surface temperature +200°C).
T195°C	Temperature class, dust (maximum surface temperature +195°C).
Gb	Equipment Protection Level, gas (high protection).
Db	Equipment Protection Level, dust (high protection).



- | | | | |
|-----------|------------------------------|-----------|-------------------------------|
| A. | Mask body | G. | Inhalation valve |
| B. | Visor, PC or glass | H. | Adapter |
| C. | Head harness | I. | Filters (not included) |
| D. | Exhalation valve seat | J. | Pre-filter |
| E. | Exhalation membrane | K. | Pre-filter holder |
| F. | Protective cap | | |



Sundström Safety AB

Tel: +46 10 484 87 00
Västergatan 4
SE-341 50 Lagan

Sundström
www.srsafety.com